



DESCRIPTION

The CT Leader range is designed for general purpose applications, such as UPS, alarmsystem, telecom and technical utilities. The batteries comply to Eurobat guide Standard Commercial and have a design life of 3-5 years.

FEATURES

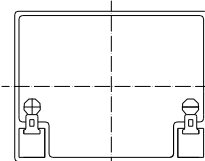
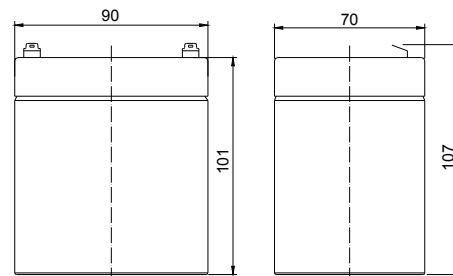
- Valve Regulated Lead Acid Batteries, [AGM].
- Positive and negative plates in lead-calcium alloy.
- Sealed construction
- Maintenance free operation
- 3-5 years design life according to Eurobat Guide - Standard commercial
- Low pressure venting system
- Low selfdischarge
- Six month shelf life at +20° C
- U.L. component recognition

SPECIFICATIONS

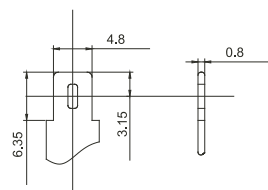
Model	CT5-12H
Nominal voltage	12 V
Number of cells	6
Nominal capacity +25° C	
20 hour rate (0,25 A - 10,5V)	5 Ah
10 hour rate (0,5 A - 10,5V)	5 Ah
5 hour rate (0,96 A - 10,5 V)	4,8 Ah
1 hour rate (4,1 A - 9,60V)	4,1 Ah
Internal resistance	32 mOhm
Self discharge	3% of capacity decline per month at +20° C
Operating temperature range	
Discharge	-20 to +60° C
Charge	-10 to +60° C
Storage	-20 to +60° C
Max discharge current (5 sec)	75 A
Short circuit current	270 A
Max. charge current	2 A
Charging methods at +20° C	
Cycle use	
Constant voltage charge	14,4 - 14,7 V
Temperature compensation	-30 mV/° C
Stand-by use	
Constant voltage charge	13,6 - 13,8 V
Temperature compensation	-20 mV/° C

DIMENSIONS AND WEIGHT

Length	90 mm
Width	70 mm
Height	101 mm
Total height	107 mm
Weight	1,8 kg



TERMINAL DIMENSIONS



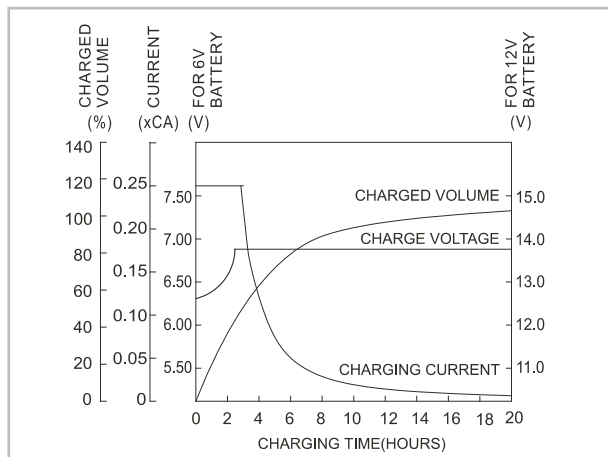
DISCHARGE DATA, CONSTANT CURRENT (AMPERES AT +25 °C)

End voltage (V/cell)	5 min	10 min	15 min	30 min	1 h	3 h	5 h	10 h	20 h
1,60	26,5	17,0	13,0	7,00	4,10	1,55	1,01	0,52	0,27
1,65	25,4	16,4	12,5	6,81	4,02	1,51	0,98	0,51	0,26
1,70	24,3	15,7	11,9	6,62	3,93	1,48	0,97	0,50	0,26
1,75	23,1	15,1	11,4	6,41	3,85	1,44	0,96	0,50	0,25
1,80	21,8	14,4	10,8	6,20	3,76	1,40	0,95	0,50	0,25

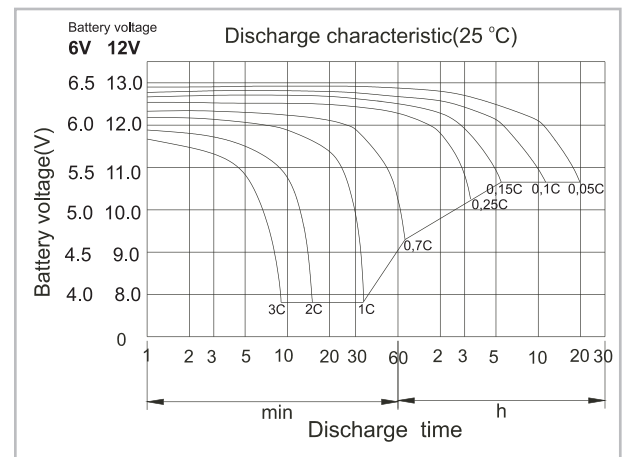
DISCHARGE DATA, CONSTANT POWER (WATTS PER CELL AT +25 °C)

End voltage (V/cell)	5 min	10 min	15 min	30 min	45 min	1 h	2 h	3 h	5 h
1,60	49,5	31,2	23,5	13,3	10,00	8,0	4,40	3,05	2,01
1,65	47,1	30,6	22,7	13,0	9,75	7,8	4,30	2,99	1,98
1,70	44,8	30,0	22,0	12,6	9,50	7,6	4,21	2,93	1,95
1,75	42,3	29,5	21,3	12,3	9,25	7,4	4,12	2,86	1,91
1,80	39,8	28,8	20,5	11,9	9,00	7,2	4,02	2,80	1,88

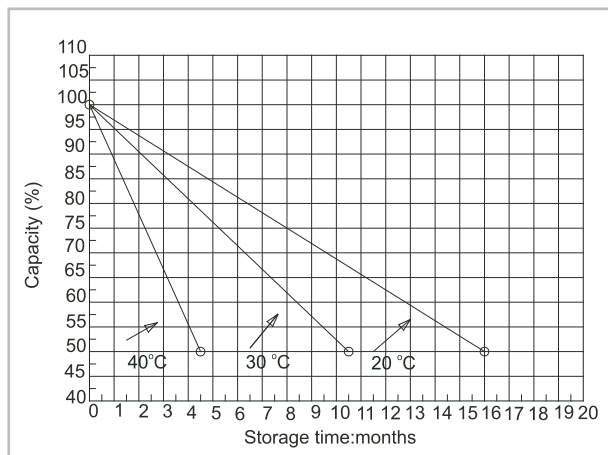
CHARGE CHARACTERISTIC



DISCHARGE CHARACTERISTIC (+25 °C)



SELF DISCHARGE



STATE OF CHARGE IN RELATION TO VOLTAGE

